



Sociology: Imagination & Race

By: Rye Amos & Shia Fisher

**UW
Madison**

Agenda

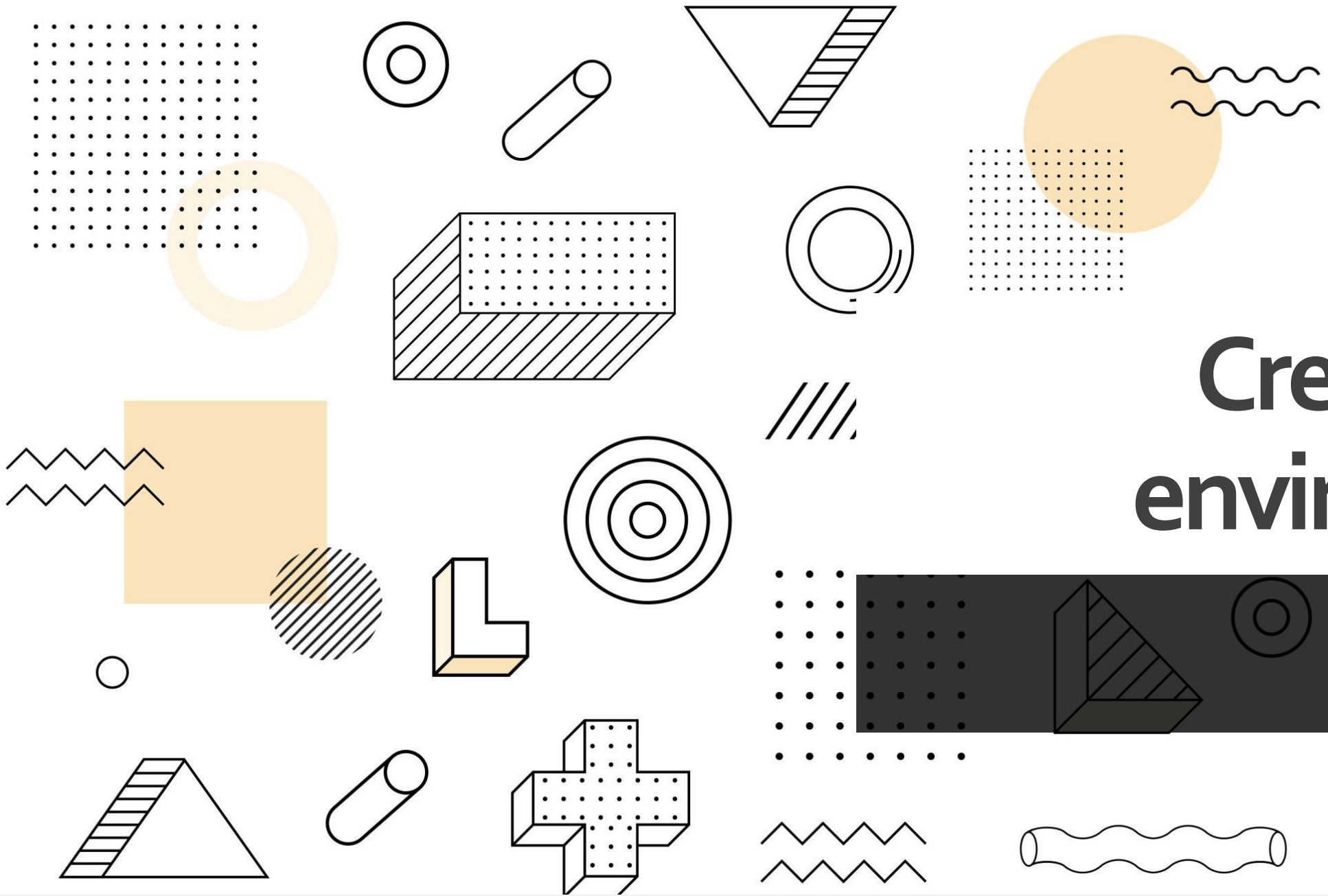
Please participate and ask questions. You may utilize the chat feature, hand raising feature, or politely interject.

Shia Fisher

- Opening Disclaimer (1.5min)
- Warm-up / ice breaker (5min)
- Distinguishing Terms (2min)
- Interplay of Society (2min)
- Discussion Questions (5mins)

Rye Amos

- Warm-up exercise (1.5min)
- Respond to the prompt on discrimination (5min)
- Discussion Questions (6min)
- Closing Question(4min)
- Thank You Slide (.5min)



Creating an environment

Safe Space / Brave Space



Imaging Divergent Milieus

Social Constructions

Non-possesive Thinking

Society

Culture

Avoid sterotyping in this exerise.

Warm Up #1 / Ice breaker

Prompt: imagine milieu that is not your own

Category (Threshold)	Healthcare	Weather	Public Gathering	National Security	Food Scarcity	Housing
	Individual Illness	Flood	Protest	Training Exercise	Individual Poverty	Houselessness
	Reported illnesses	Hail	Boycott	Weapons Testing	City, State, Providence	Eviction Crisis
	Outbreak	Tornado	Civil Disobedance	Armed Conflicts	National Economic	Increasing Rent
	Epidemic	Tsunami	Riot	Planned Attacks	Environmental	Safety
	Pandemic	Hurricanes	Insurrection	War	Global	Homeownership Redlining

"The Promise" Reading

C. Wright Mills published in 1959

Distinguishing Terms

- **Issue**

- “have to do with matters that transcend these local environments of the individual and the range of his inner life.”

- **Trouble**

- “occur within the character of the individual and within the range of his immediate relations with others; they have to do with his self and those limited areas of social life of which he is directly and personally aware.”

Distinguishing Terms

You discuss

- **Individual**

- **Structure**

- **Institution**

Interplay of society...

- "After two centuries of ascendancy, capitalism is shown up as only one way to make society into an industrial apparatus," (2).
- "After two centuries of hope, even formal democracy is restricted to a quite small portion of mankind," (2).

The background of the slide features several light blue paper cutouts of human heads in profile, facing right. Some heads contain a black question mark, while one central head contains a blue line-art lightbulb with radiating lines, symbolizing an idea or thought. The cutouts are layered, creating a sense of depth.

Discussion Questions

- What are your thoughts concerning morality, and achieving one's desires?
- In what ways can the "well-being" become better aware of the interplay between man and society?
- How does the categorization / key terms inform our views of major events that are not natural disasters? (Please provide an example)

stances. Achieving a balance
the laws.

EQUAL OPPORTUNITY

tion of employ
of race, color,
was outlawed b

Title VII also

conversations [XXXX] to

something with local agents

"Race, Place, and Power" Reading

Introduction to *The Possesive Investment in Whiteness* by
Lipsitz



Warm Up #2

Race, Place, and Power Introduction Reading

Interpret this Quote:

"King saw the laws passed by Congress as fatally flawed, designed deliberately to be inadequate and destined never to be fully enforced. Rather than resolving racial inequalities responsibly, these laws enabled whites to pretend that the problem had been solved. **They catered to white vanity but did little to protect Black humanity.**" (16)



Discrimination

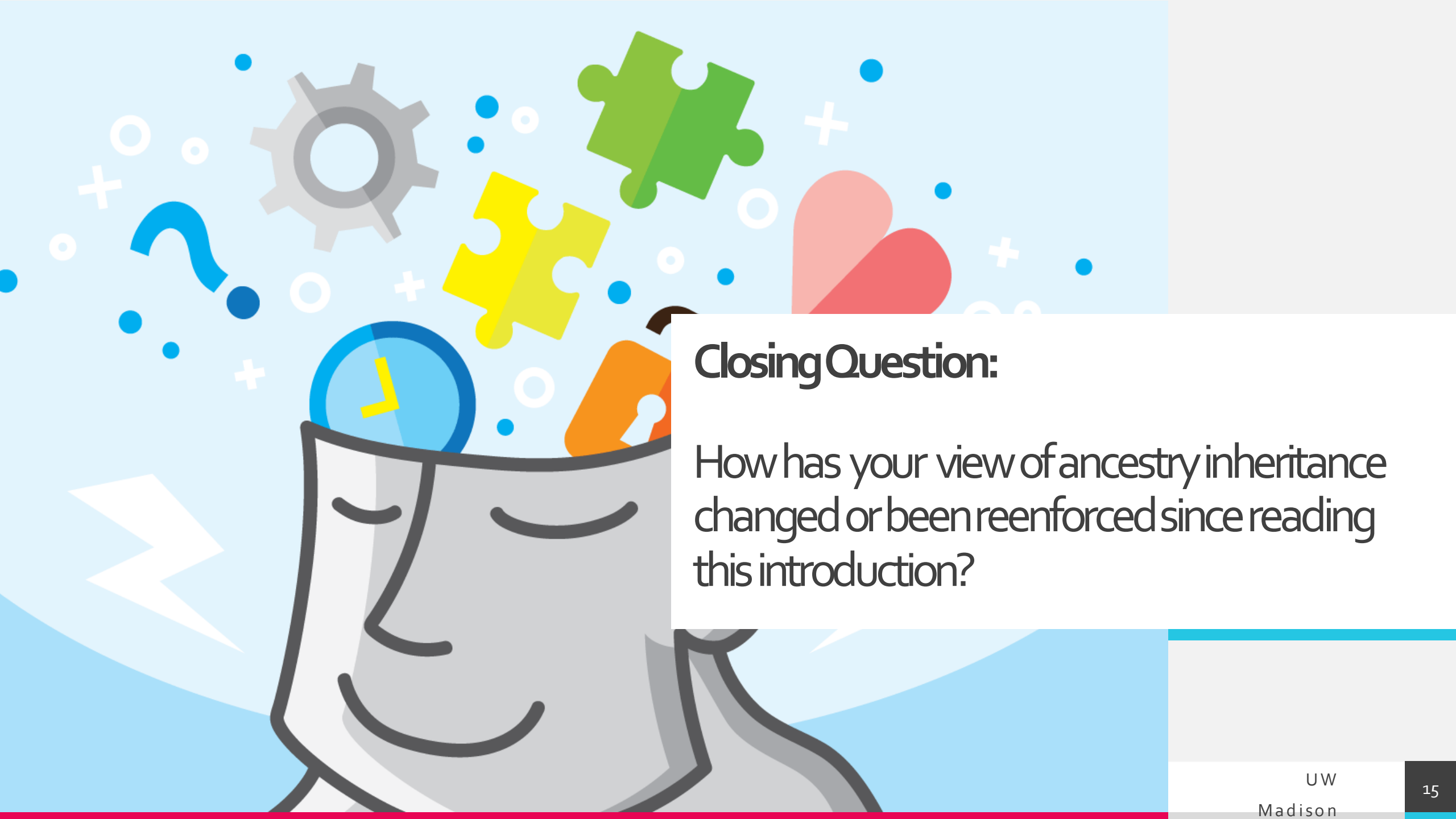
Respond to this quote from the text:

- “Some of these critics even blame these conditions on civil rights laws themselves, arguing that efforts to desegregate schools, to promote fair hiring, and to end housing discrimination have led Blacks to expect special preferences and privileges simply because they are Black,” (17).

Discussion Questions

- Why is anti-Black racism a focus in sociology according to this author?
- Should Black people have special preferences or privileges for having African American Heritage?
- What must happen to change the current racial climate for Blacks? Have these solutions worked in the past? If not, what caused them to fail?





Closing Question:

How has your view of ancestry inheritance changed or been reenforced since reading this introduction?



Thank You!

Prepared by:

Rye Amos

Shia Fisher

for C&E SOC 140 | Dr. Sarah M. Rios

Additional Discussion Questions

- Question: Why is anti Black racism a focus in sociology according to this author?
 - Answer: “The particular history of anti-Black racism focuses our attention on urgent choices that need to be made now.” (12)
- “They enact a public pedagogy about who belongs where and about what makes certain spaces desirable,” (15)
- Question: What are the dangers of permitting racial used spaces?
 - Answer: “It misallocates resources by squandering the talents and abilities of deserving Blacks while moving less talented whites into positions they do not deserve,” (21).